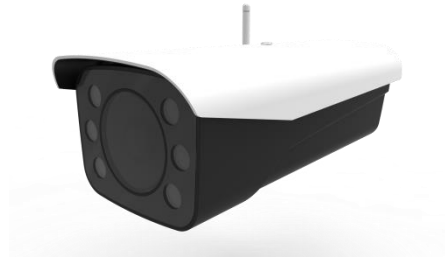

STD-8HA8432-ALRSZ (F1030)
4MP smart face recognition-shield all-in-one
machine



Product description:

Smart functions

- Support face detection, tracking, capture, scoring and screening, output the best face capture, and reduce repeated captures;
- Support face area exposure, area enhancement, attribute analysis, simultaneous detection of up to 30 faces, and quick capture of faces;
- Adopt high-performance AI chip, face recognition and information extraction based on deep learning, greatly improving recognition rate of face capture;
- Support front-end face recognition and comparison, support management of up to 3 face libraries, standard 30,000 face libraries, and up to 100,000 face libraries;
- Support settings of blacklist and whitelist, support blacklist control and alarm; support different face databases to be armed at different times;
- Support comparison and query of identification records. The front-end can store 100,000 comparison records;

Basic skills

- Adopt a high-performance 4 million pixel 1/1.8" CMOS image sensor, with high definition, star-level low illumination, high frame rate, and good color reproduction;
 - Support maximum 2560*1440@30fps high-definition picture output, support three-code stream technology. Each code stream can be independently configured with resolution and frame rate;
 - Support H.264, H.265, adaptive (SVC) encoding format; be applicable to different bandwidths and storage environments;
 - Equipment has a built-in electric zoom lens 10-30mm, which is easy to operate and has stable zooming process;
 - Support wide dynamic, 3D noise reduction, strong light suppression, electronic shutter, digital watermark and other functions, adapt to different monitoring environments;
 - Adopt built-in high-efficiency white light fill-in light, which has low power consumption, and can perform face capture recognition at night;
 - Support Micro SD/SDHC/SDXC card storage, up to 256G; support for disconnected network transfer function to prevent video from being lost;
 - Support a variety of abnormal detection, motion detection, occlusion detection, storage abnormality, low storage space, network disconnection, IP conflict, MAC conflict, illegal access;
 - Support AC24V/DC12V \pm 20% power supply mode, wide voltage design;
 - Support standard Onvif protocol, national standard GB28181, GA/T1400 protocol, docking cloud service, Alibaba Cloud platform;
 - 12-inch one-piece metal structure body, with sun visor, IP67 protection level, anti-surge, anti-static, lightning protection design;
-

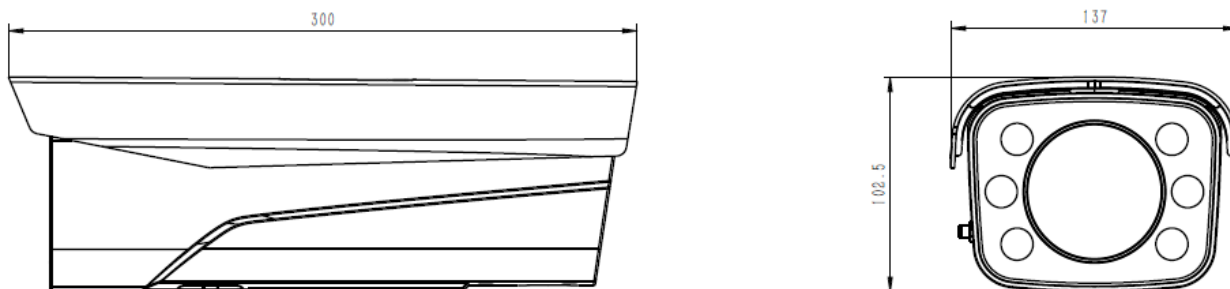
Order model:

STD-8HA8432-ALRSZ (F1030) (Model extension: L: white light / P:POE / Z: zoom / S: audio / A: communication / J: alarm)

Application scenarios:

It is suitable for scenes needing face recognition or need high-definition picture quality, such as lighting projects, communities, shops, supermarkets, hotels, banks, train stations, bus stations, airports, subways, governments, hospitals, schools, buildings, public security skynet, etc.

Product size: (unit: mm)



Product parameters:

Basic parameters	Model	STD-8HA8432-ALRSZ (F1030)
	Sensor type	1/1.8", Progressive Scan CMOS
	Minimum illumination	0.001Lux (color mode); 0.0001Lux (black-white mode)
	Electronic shutter	1/50—1/100,00 second
	Wide dynamic range	≥120dB
	Signal-to-noise ratio	≥56dB
	HD lens	Electric zoom lens 10-30mm
Professional intelligence	Smart function	Face detection, face tracking, face optimization, face attributes, face recognition, face exposure, face enhancement
	Face capture performance	At the same time, it can detect up to 30 faces; the minimum and maximum pixels of the detection face can be set, and the detection area can be set
		Face cutout, half body cutout, full body cutout; capture rate not less than 98%, repeat capture rate less than 5%
	Face capture mode	Optimal mode, automatic mode, monitoring mode; number of snapshots and time can be set
	Face attribute analysis	Age, gender, masks, glasses, expressions, etc.
	Face recognition efficiency	Recognition accuracy rate ≥99.50%, recognition speed ≤0.2S
	Face database management	3 face libraries, standard 30,000 face libraries, maximum 100,000 face libraries, storage of 100,000 comparison records
Black-white list	Support blacklist and whitelist comparison, blacklist control alarm	
Coding standard	Video coding standard	H.264B、H.264M、H.264H、H.265、MJPEG、SVC
	Output bit rate	Video bit rate: 256Kbps~16384Kbps, picture bit rate: 50KB~1024KB
	Audio coding	Audio compression standards: G711a, G711Mu, PCM; audio sampling rate:

		16KHz
Image parameters	Maximum resolution	400W(2560*1440)
	Resolution and frame rate	Main code stream: 50Hz:25fps(2560×1440、1920×1080,1280×720),60Hz:30fps(2560×1440、1920×1080,1280×720); Sub code stream 1: 50Hz:25fps(1280×720、704×576,352×288);60Hz:30fps(1280×720、704×576,352×288); Sub code stream 2: 50Hz:25fps(1280×720,704×576); 60Hz:30fps(1280×720,704×576);
	Image processing	Saturation, brightness, contrast, and adjustable chroma; global metering, local metering, day and night switching, strong light suppression, backlight compensation, exposure, wide dynamic, gain, aperture, white balance, 3D noise reduction, fog, Gamma, adjustable scene mode, image flip, mirror, video/image watermark added
	OSD information overlay	Picture and video OSD settings, name, date, weekday, address, font, coordinates, etc.
	Region of interest	Face ROI enhancement, support for setting 4 regions
	Internet function	Interface Protocol
Network protocol		TCP/IP,ICMP,HTTP,HTTPS,FTP,DHCP,DNS,RTP,RTSP,RTCP,NTP,QoS,IP v6
Smart alarm		Video occlusion, motion detection, network disconnection, IP address conflict, MAC conflict, storage abnormality, low storage control, mixing line invasion, regional invasion
Monitor alarm		Support, can be set
Play alarm tones		Support
Video recording		Manual recording; Alarm recording; Timing recording; Motion detection recording;
User authority management		Support level 2 user authority, access up to 20 users at the same time; support password protection
Restore default parameters		Support one-key restore to factory settings
System clock		Built-in clock, support PC synchronization, NTP time calibration, time zone setting, daylight saving time
Remote management		Support remote online upgrade, support parameter setting and configuration import and export
Active registration		Support
Hardware interface	Communication Interface	1 10/100M adaptive Ethernet port
	Local storage	TF card storage (maximum 256G), support for resumable transmission after disconnected network
	Network storage	Support SDK storage and FTP storage, up to 4 can be set, support the function of resuming network transmission, and it can be set
	Alarm interface	2 inputs, 2 outputs
	Audio port	1 RCA input; 1 RCA output
	485 interface	1 way
Smart fill	White light	Built-in 6 white lights, 2 on the top at 25 degrees, 4 on the bottom at 65

light		degrees
	Power control	Software control
	Photosensitive control	No photosensitivity
	Brightness adjustment method	PWM
General specification	Working environment	-30℃~70℃, humidity is less than 95% (non-condensing)
	Power input	AC24V, DC12V±20% power supply
	Power consumption	≤5W (fill light is not turned on)
	Protection level	Metal structure material, IP67 protection level, anti-surge, anti-static, lightning protection design
	Size(mm)	300 (L)*137(W)*102.5(H)
	Bare metal weight	About 3.0KG

Interface definition:

FIGURE 1-1 SCHEMATIC DIAGRAM OF EXTERNAL CABLES

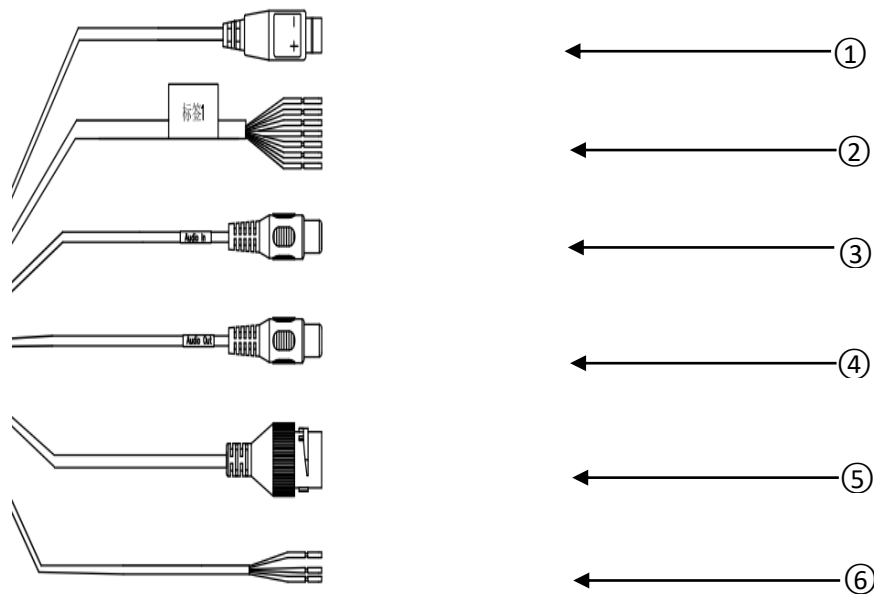


TABLE 1 EXTERNAL CABLE FUNCTION INTRODUCTION

No.	Interface	Name of interface	Connector	Description
1	POWER	Power interface input		Input DC 12V or AC 24V. Make sure to supply power to the device in accordance with the instructions on the device label when using.
2	I/O	I/O port	-	For the input/output of alarm signal, please refer to Table 2-2 according to the device label description in actual use.
3	AUDIO IN	Audio input	RCA	Input audio signals and receive analog audio signals from equipment such as

		interface		pickups.
4	AUDIO OUT	Audio output interface	RCA	Output audio signals to audio and other equipment.
5	LAN	Network Interface	Ethernet port	Connect a standard Ethernet cable.
6	RS485	RS485	-	Connect the external 485 device. Please refer to Table 2-3 according to device label description in actual use.

TABLE 2 I/O PORT FUNCTION INTRODUCTION

Interface name	Cable interface name	Description
I/O port	ALARM_NO	Alarm output interface, output alarm signal to alarm equipment.
	ALARM_NC	
	ALARM_NO2	
	ALARM_NC2	
	ALARM_IN	Alarm input interface receives the switch signal of the external alarm source.
	GND	Ground terminal

TABLE 3 RS485 PORT FUNCTION INTRODUCTION

Interface name	Cable interface name	Description
RS485 port	RS485A	RS485 interface A, connecting to external 485 equipment.
	RS485B	RS485 interface B, connecting to external 485 equipment.
	GND	Ground terminal